

Mangrove Ecosystem

is extraordinary tropical forests that grow at the edge of the land and sea.

What makes them "extraordinary"?



Prevents erosion

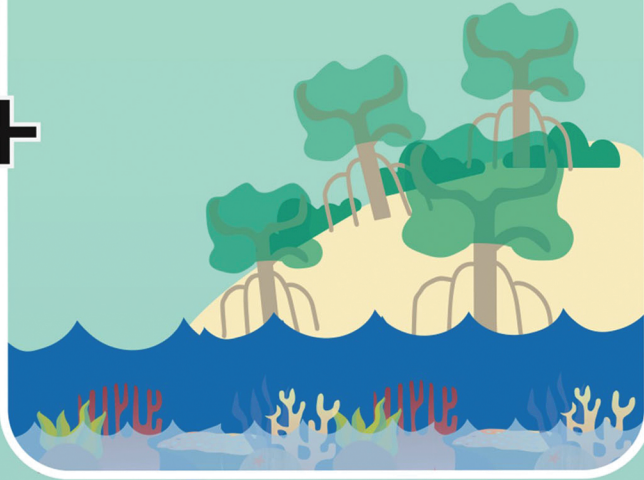


Store vast amount of carbon



Support fisheries productivities

Support sustainable livelihoods through ecotourism

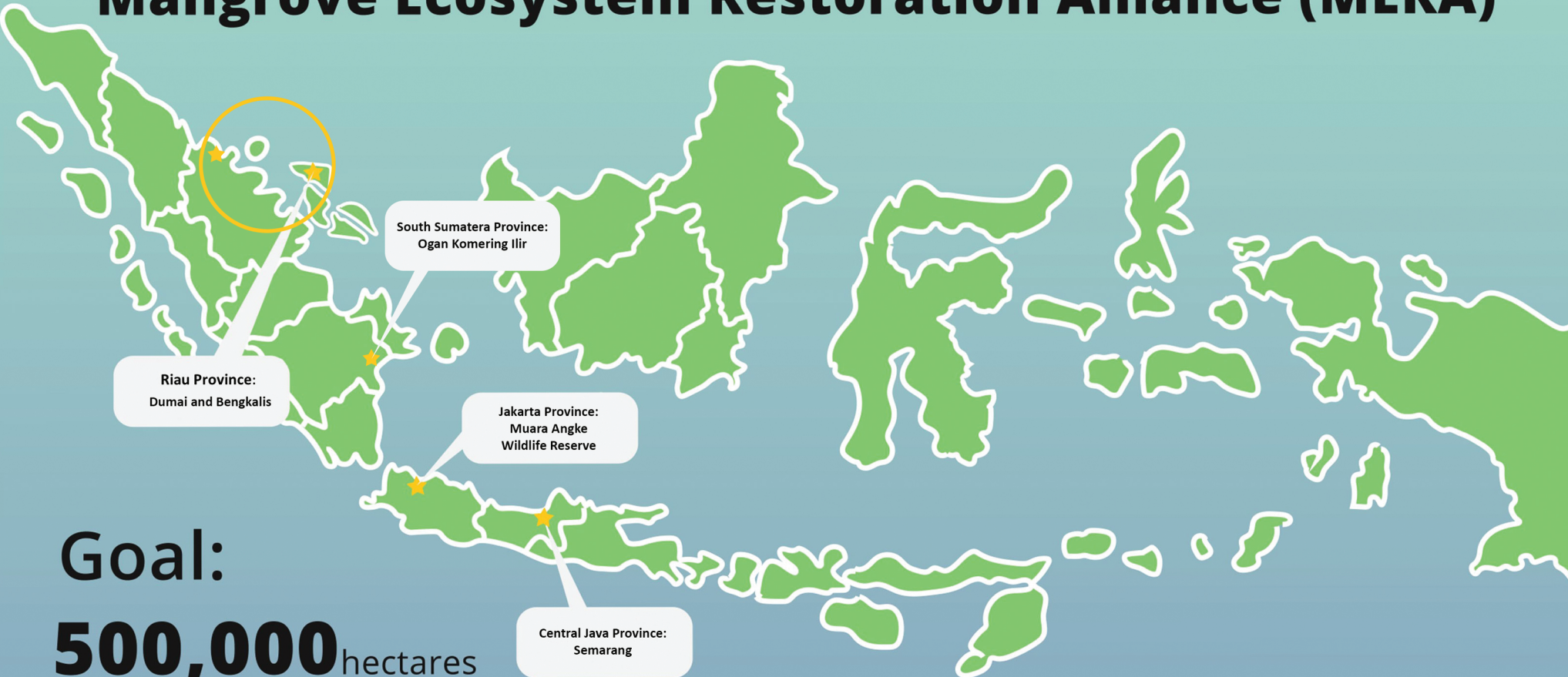


What are the challenges?

52,000 hectares of Indonesian mangrove loss per year; faster than tropical rainforests and coral reefs.

Land-use conversion into into shrimp ponds, excessive logging, salt pans agriculture, pollution and solid waste.

Mangrove Ecosystem Restoration Alliance (MERA)



Goal:

500,000 hectares of mangrove ecosystem restored and sustainably managed to support coastal livelihoods and Indonesia's biodiversity with multistakeholder partnership by 2025.

Core Activities



Build socio-economic and scientific strong base line information of mangrove condition.



Actively engage with national and local government, private sectors, and local communities through integrated collaborative management.



Demonstrate effective mangrove protection, restoration, and management by developing sustainable financing scheme.



Promoting community awareness and participation, including capacity building component for key stakeholders.

Project Timeline

1st year

Research & Planning



2nd year

Stakeholder engagement & strengthening policy



3rd - 5th year

Project implementation



Raising awareness & build capacity

